



**Büro Statik Mühendislik İnşaat San. ve Tic. Ltd. Şti.**, has been established by Fatih Yeşilselvi and Orhan İlkay Ergüneş at the year 2006. The founders are serving as project engineers since 1998. In the meantime they have actively been involved in projects such as ferroconcrete, steel construction etc. Most of the accomplished projects are special and some of them will be mentioned above.

Structural engineering not only consists of essential features as conformity to technical and special specifications and durability but also quick feasibility, economy and usability. The usability, economy and the usability at the level of keeping up with variable conditions of a structure is mainly shaped in planning period. At this point, the knowledge and experience of the project team becomes more of an issue. **Büro Statik Mühendislik İnşaat San. ve Tic. Ltd. Şti.**, guarantees actualizing academical knowledge alongside of the concepts such as experience gained in previous projects, durability and economy.

**Büro Statik Mühendislik İnşaat San. ve Tic. Ltd. Şti.**, firstly takes usability into consideration in ferroconcrete static projects and takes the principle of generating every detail by an engineer and/or technical draftsmen instead of program print-outs. The technical drawings prepared in this manner are also checked by project manager which leads the minimization of the possible defects. Thus, the details which are impossible or notably hard and time loss at the field are prevented and construction period is stepped up.

**Büro Statik Mühendislik İnşaat San. ve Tic. Ltd. Şti.**, without making concessions to durability and usability at present conditions, takes economy, prompt designing and fulfilling customers' demands as its constant principles. Our firm aims to gain confidence by the services rendered in accordance with these principles.



## MÜHENDİSLİK İNŞAAT SANAYİ ve TİCARET LTD. ŞTİ.

### REFERENCE LIST

PROJECT NAME	TYPE	COMPANY	TURNOVER	DATE
SİNPAŞ BURSA HOTEL PROJECT	REINFORCED CONCRETE CONTROL & RENOVATION	SİNPAŞ INC. 212 310 27 27	12.000m <sup>2</sup>	2006
DOĞUŞ POWER CENTER	CONSULTANCY SERVICE OF STEEL CONSTRUCTION PROJECT	GARANTİ REAL ESTATE 212 286 00 87	7.000m <sup>2</sup>	2006
ÇAYIROVA RESIDENCES	REINFORCED CONCRETE	ARKSİS ARCHITECTS 212 358 55 10	16.000m <sup>2</sup>	2006
KÜÇÜKÇEKMECE MUNICIPALITY CULTURAL CENTRE	REINFORCED CONCRETE/ STEEL CONSTRUCTION	KONAK ARCHITECTS 212 351 41 75	9.000m <sup>2</sup>	2006
GAP CONSTRUCTION TÜRKMENİSTAN	REINFORCED CONCRETE 20-STOREY HOUSING PROJECT	GAP CONSTRUCTION 212 454 46 46	19.000m <sup>2</sup>	2007
BORUSAN ART GALLERY	STEEL CONSTRUCTION	GAD ARCHITECTURE 212 327 51 25	1.800m <sup>2</sup>	2007
DOKA FORMWORK FACTORY	REINFORCED CONCRETE	SERDAR ÇELİK ARCHITECTS 212 269 65 18	3.000m <sup>2</sup>	2007
VAKKO HEAD OFFICE	REINFORCED CONCRETE/ STEEL CONSTRUCTION	VAKKO INC. 212 481 63 00	10.000m <sup>2</sup>	2007
EYÜP SHOPPING CENTRE & HOTEL PROJECT	REINFORCED CONCRETE CONTROL & RENOVATION	SİNPAŞ INC. 212 310 27 27	118.000m <sup>2</sup>	2007
HYUNDAI-ROTEM HIGH SPEED TRAIN WAGON FACTORY	STEEL CONSTRUCTION	SERDAR ÇELİK ARCHITECTS 212 269 65 18	9.000m <sup>2</sup>	2007
SİNPAŞ KELEBEKİA	REINFORCED CONCRETE	SİNPAŞ INC. 212 310 27 27	60.000m <sup>2</sup>	2008
ZEYTİNBURNU TRADE CENTRE	REINFORCED CONCRETE	SİNPAŞ INC. 212 310 27 27	28.000m <sup>2</sup>	2008
ERZİNCAN UNIVERSITY YALNIZBAĞ CAMPUS	REINFORCED CONCRETE	KONAK ARCHITECTS 212 351 41 75	210.000m <sup>2</sup>	2008
HAYAT KİMYA MANUFACTURING FACTORY –ROLLER PRODUCTS-	STEEL CONSTRUCTION	HAYAT HOLDING 216 554 40 00	12.000m <sup>2</sup>	2008
KASTAMONU ENTEGRE GLUE FACTORY	STEEL CONSTRUCTION	KASTAMONU ENTEGRE INC. 262 724 84 25	5.500m <sup>2</sup>	2008
NOVY URENGOY DAY CARE CENTRE	REINFORCED CONCRETE	YAMATA INC. 216 537 03 00	8.000m <sup>2</sup>	2008
MUJİ HOSPITAL PROJECT	REINFORCED CONCRETE	YAMATA INC. 216 537 03 00	10.000m <sup>2</sup>	2008
HAYAT KİMYA IRANIAN FACTORY	STEEL CONSTRUCTION CONTROL	HAYAT HOLDING 216 554 40 00	20.000m <sup>2</sup>	2008
TOYOTA SA HEAD OFFICE BUILDING	REINFORCED CONCRETE/ STEEL CONSTRUCTION CONTROL & ADDITION	KG ARCHITECTS 212 257 83 70	6.500m <sup>2</sup>	2008
TYUMEN HOUSING-OFFICE-STORE COMPLEX	REINFORCED CONCRETE	YAMATA INC. 216 537 03 00	120.000m <sup>2</sup>	2008
ESENLER MUNICIPAL PRESIDENCY BUILDING	REINFORCED CONCRETE	M-OFİS ARCHITECTS 212 287 64 50	45.000m <sup>2</sup>	2008



## MÜHENDİSLİK İNŞAAT SANAYİ ve TİCARET LTD. ŞTİ.

PROJECT NAME	TYPE	COMPANY	TURNOVER	DATE
GRAND SLAM HOUSING COMPLEX	REINFORCED CONCRETE	SERDAR ÇELİK ARCHITECTS 212 269 65 18	12.000m <sup>2</sup>	2008
KHIBC CANCER HOSPITAL	REINFORCED CONCRETE	KORAY ENTERNASYONAL	130.000m <sup>2</sup>	2009
DAŞOĞUZ MOSQUE	REINFORCED CONCRETE	GAP CONSTRUCTION 212 454 46 46	3.000m <sup>2</sup>	2009
TÜRKMENİSTAN EYE HOSPITAL	REINFORCED CONCRETE	GAP CONSTRUCTION 212 454 46 46	15.000m <sup>2</sup>	2009
AQUACITY 2010 GARAGE & COMMUNITY FACILITIES	REINFORCED CONCRETE	SİNPAŞ INC. 212 310 27 27	50.000m <sup>2</sup>	2009
İSMET KOÇAK TRADE CENTRE	REINFORCED CONCRETE	SUR YAPI INC. 216 422 56 37	12.000m <sup>2</sup>	2009
TRİLYE MARİN CLUB	STEEL CONSTRUCTION	SİNPAŞ INC. 212 310 27 27	2.500m <sup>2</sup>	2009
SEV SCHOOLS	REINFORCED CONCRETE	MİMARLAR LLC. 216 326 97 19	20.000m <sup>2</sup>	2010
SİNPAŞ ANTEPIA	REINFORCED CONCRETE	SİNPAŞ INC. 212 310 27 27	40.000m <sup>2</sup>	2010
ÇANKAYA THE FIRST	REINFORCED CONCRETE/ STEEL CONSTRUCTION -20-STOREY TOWER	SİNPAŞ INC. 212 310 27 27	180.000m <sup>2</sup>	2010
OTTOMARE SUITES	REINFORCED CONCRETE -32-STOREY TOWER (2 pcs)	OTTOMAN INC.	63.000m <sup>2</sup>	2010
SUR YAPI TRADE CENTRE	REINFORCED CONCRETE/ STEEL CONSTRUCTION	SUR YAPI INC. 216 422 56 37	2.500m <sup>2</sup>	2010
ECZACIBAŞI ORMANADA – VILLA SITE	REINFORCED CONCRETE	KREATİF ARCHITECTS 212 216 71 31	105.000m <sup>2</sup>	2010
SEAPEARL KUZUGRUP	REINFORCED CONCRETE HOUSING PROJECT	KAT TURİZM INC. 212 310 27 57	400.000m <sup>2</sup>	2011
İKİTELLİ TRADE CENTRE	REINFORCED CONCRETE	SUR YAPI INC. 216 422 56 37	15.000m <sup>2</sup>	2011
YENİBOSNA TRADE CENTRE	REINFORCED CONCRETE	SUR YAPI INC. 216 422 56 37	18.000m <sup>2</sup>	2011
GOSB SHOPPING CENTRE	REINFORCED CONCRETE/ STEEL CONSTRUCTION	AY TASARIM 262 291 12 96	6.000m <sup>2</sup>	2011
KELEBEKİA 2	REINFORCED CONCRETE	SİNPAŞ INC. 212 310 27 27	20.000m <sup>2</sup>	2011
ROYAL APARTMENTS 3	REINFORCED CONCRETE/ TUNNEL FORMWORK	BC GROUP 212 588 13 97	100.000m <sup>2</sup>	2011
NEST HOUSING & COMMUNITY FACILITIES	REINFORCED CONCRETE	KREATİF ARCHITECTS 212 216 71 31	22.000m <sup>2</sup>	2011
EMPIRE WORLD IRAQ	REINFORCED CONCRETE/ TUNNEL FORMWORK	FALCON GROUP +964 750 40 50 581	800.000 m <sup>2</sup>	2012
VALLELACUS	40 VILLAS & RECREATIONAL FACILITY	KULAK CONSTRUCTION 212 283 09 43	44.000 m <sup>2</sup>	2012
TAKSİM GENÇOĞLU HOTEL PROJECT	REINFORCED CONCRETE	KREATİF ARCHITECTS 212 216 71 31	4.000 m <sup>2</sup>	2012
MAÇKA TANRIVERDİ HOTEL PROJECT	REINFORCED CONCRETE	KREATİF ARCHITECTS 212 216 71 31	6.000 m <sup>2</sup>	2012
MARMARİS HEMA HOTEL	REINFORCED CONCRETE EXISTING HOTEL ASSESSMENT	SİNPAŞ INC. 212 310 27 27	70.000 m <sup>2</sup>	2012
EKOL SCHOOL PROJECT-	REINFORCED CONCRETE	KREATİF ARCHITECTS	12.000 m <sup>2</sup>	2012



## MÜHENDİSLİK İNŞAAT SANAYİ ve TİCARET LTD. ŞTİ.

PROJECT NAME	TYPE	COMPANY	TURNOVER	DATE
BEYOĞLU		212 216 71 31		
ÖZKA ÇERKEŞ TIRE FACTORY	REINFORCED CONCRETE/ STEEL CONSTRUCTION	ŞEVKİ PEKİN MİMARLIK 212 258 35 88	200.000 m <sup>2</sup>	2012
PİRİ REİS UNIVERSITY- DORMITORY BUILDING	REINFORCED CONCRETE	KREATİF ARCHITECTS 212 216 71 31	20.000 m <sup>2</sup>	2012
ESENTEPE QSTUDIO HOUSING PROJECT	REINFORCED CONCRETE	KG ARCHITECTS 212 257 83 70	6.000 m <sup>2</sup>	2012
TOYA VİSTA HOUSING PROJECT	REINFORCED CONCRETE	TOYA REAL ESTATE 212 444 86 92	24.000 m <sup>2</sup>	2012
MARMARİS KIZIL KUM VILLA SITE	REINFORCED CONCRETE	SİNPAŞ INC. 212 310 27 27	40.000m <sup>2</sup>	2012
NOYABSK NO.8 HOUSING SITE PROJECT	REINFORCED CONCRETE/ TUNNEL FORMWORK	KAYAALP ARCHITECTS 212 236 61 55	217.000m <sup>2</sup>	2012
MALATYA SCHOOL & DORMITORY BUILDING	REINFORCED CONCRETE	SUR YAPI INC. 216 422 56 37	11.000m <sup>2</sup>	2012
KOÇ UNIVERSITY HOSPITAL (STAGE 1)	REINFORCED CONCRETE	KREATİF ARCHITECTS 212 216 71 31	150.000m <sup>2</sup>	2012
BABILON TOWER	REINFORCED CONCRETE - 47-STOREY	TAGO ARCHITECTS 216 651 77 77	70.000 m <sup>2</sup>	2013
ASYAPI MASLAK	REINFORCED CONCRETE - 20-STOREY	ASYAPI 216 693 06 93	18.000 m <sup>2</sup>	2013
MEKKE HOTEL AND SHOPPING CENTRE PROJECT	REINFORCED CONCRETE	BAYTUR 00 90 662 510 70 78	200.000 m <sup>2</sup>	2013
SİNPAŞ SANCAKTEPE	REINFORCED CONCRETE	SİNPAŞ INC. 212 310 27 27	50.000 m <sup>2</sup>	2013
GLUE FACTORY	STEEL CONSTRUCTION	KASTAMONU ENTEGRE INC. 262 724 84 25	20.000 m <sup>2</sup>	2013
İLKA PLASTIC FACTORY	REINFORCED CONCRETE/ STEEL CONSTRUCTION	ŞEVKİ PEKİN ARCHITECTS 212 258 35 88	15.000 m <sup>2</sup>	2013
DOCOWORKPLACE AND SERVICE BUILDING PROJECT	REINFORCED CONCRETE/ STEEL CONSTRUCTION	KUP ARCHITECTS 216 470 50 37	10.000 m <sup>2</sup>	2013
PACKAGING FACTORY	REINFORCED CONCRETE/ STEEL CONSTRUCTION	HAYAT HOLDING 216 554 40 00	39.000 m <sup>2</sup>	2013
KORU RESIDENCE	REINFORCED CONCRETE - 26-STOREY	ATAMAN CONSTRUCTION 216 470 50 37	12.000 m <sup>2</sup>	2013
YENİBOSNA HAYAT	REINFORCED CONCRETE OFFICE PROJECT	SUR YAPI INC. 216 422 56 37	15.000 m <sup>2</sup>	2013
İZMİR ALTINPARK ARCHEOLOGICAL SITE PROTECTIVE STRUCTURE	STEEL CONSTRUCTION	ATÖLYE ARCHITECTS 212 251 35 58	3.000 m <sup>2</sup>	2013
SOMA 301-HOUSING PROJECT	REINFORCED CONCRETE	DOĞUŞ REAL ESTATE	50.000 m <sup>2</sup>	2014
KOÇ AMERICAN HOSPITAL (PHASE 2)	REINFORCED CONCRETE	KOÇ HOLDING	50.000 m <sup>2</sup>	2014
DKY KARTAL	REINFORCED CONCRETE HOUSING METRO MARKET	DKY CONSTRUCTION 216 517 95 17	120.000 m <sup>2</sup>	2014
RESİM İSTANBUL	REINFORCED CONCRETE/ TUNNEL FORMWORK	ORTADOĞU GROUP 212 217 25 25	225.000 m <sup>2</sup>	2014
KOLUMAN PLAZA GAZİANTEP	REINFORCED CONCRETE - 35-STOREY TOWER	KOLUMAN INC. 312 583 73 00	35.000 m <sup>2</sup>	2014



## MÜHENDİSLİK İNŞAAT SANAYİ ve TİCARET LTD. ŞTİ.

PROJECT NAME	TYPE	COMPANY	TURNOVER	DATE
TUANA EVLERİ	REINFORCED CONCRETE- HOUSING PROJECT	AY TASARIM ARC. 216 291 12 96	75.000 m <sup>2</sup>	2014
TÜBİTAK DATA CENTER	REINFORCED CONCRETE	AY TASARIM ARC. 216 291 12 96	8.000 m <sup>2</sup>	2014
İZMİR MEGAPOLCITY	REINFORCED CONCRETE - 40-STOREY TOWER (2 pcs)	MEGAPOL GROUP 232 462 55 77	205.000 m <sup>2</sup>	2014
ÇARŞI KULE	REINFORCED CONCRETE - 35-STOREY	MEGAPOL GROUP 232 462 55 77	40.000 m <sup>2</sup>	2014
BOMONTİ QUEEN CENTRAL PARK	REINFORCED CONCRETE - 55-STOREY	SİNPAŞ INC. 212 310 27 27	150.000m <sup>2</sup>	2014
ANKARA 360	REINFORCED CONCRETE - 48-STOREY	SİNPAŞ INC. 212 310 27 27	155.000m <sup>2</sup>	2014
VAKIF GYO-HALK GYO HOUSING PROJECT SANCAKTEPE	REINFORCED CONCRETE/ TUNNEL FORMWORK	MUTLU ÇİLİNGİROĞLU ARC. 212 247 43 96	225.000m <sup>2</sup>	2015
REGES ÇEŞME -HOTEL PROJECT	REINFORCED CONCRETE/ STEEL CONSTRUCTION	DİLEKÇİ ARCHITECTS 212 277 11 50	26.000m <sup>2</sup>	2015
SEAPEARL-KUZU GROUP HOTEL	REINFORCED CONCRETE	EVRENOL ARCHITECTS 216 326 97 19	75.000m <sup>2</sup>	2015
LCW -GİYİMKENT OFFICE BUILDING	REINFORCED CONCRETE	EVRENOL ARCHITECTS 216 326 97 19	80.000m <sup>2</sup>	2015
BORUSAN SAMANDIRA SERVICE BUILDING	REINFORCED CONCRETE/ STEEL CONSTRUCTION ROOF	ARKİZON ARCHITECTS 216 550 23 58	40.000m <sup>2</sup>	2015
SUR YAPI İLKBAHAR SULTANBEYLİ	REINFORCED CONCRETE	SUR YAPI INC. 216 422 56 37	64.000m <sup>2</sup>	2015
HAYAT KİMYA NIGERIA	STEEL CONSTRUCTION	HAYAT KİMYA INC. 262 724 84 25	75.000m <sup>2</sup>	2015
SUR YAPI ÇAMLICA OFFICE BUILDING/TRADE CENTER	REINFORCED CONCRETE	SUR YAPI INC. 216 422 56 37	80.000m <sup>2</sup>	2015
SUR YAPI TOPKAPI	REINFORCED CONCRETE	SUR YAPI INC. 216 422 56 37	67.000m <sup>2</sup>	2015
KOÇ UNIVERSITY- DORMITORY BUILDING	REINFORCED CONCRETE	KREATİF ARCHITECTS 212 216 71 31	20.000m <sup>2</sup>	2015
PİRİ REİS UNIVERSITY- DORMITORY BUILDING	REINFORCED CONCRETE	KREATİF ARCHITECTS 212 216 71 31	18.000m <sup>2</sup>	2015
SİNPAŞ ÇAKMAK	REINFORCED CONCRETE HOUSING-TRADE BUILDING	SİNPAŞ INC. 212 310 27 27	300.000m <sup>2</sup>	2015
FORTİS İSTANBUL	REINFORCED CONCRETE- HOUSING PROJECT	YİĞİT CONSTRUCTION	60.000 m <sup>2</sup>	2015
REGATA RUSSIA	REINFORCED CONCRETE- HOUSING PROJECT	TAGO ARCHITECTS 216 651 77 77	84.000 m <sup>2</sup>	2015
İKİTELLİ LOJİSTİK	REINFORCED CONCRETE - LOGISTIC WAREHOUSE	SİNPAŞ INC. 212 310 27 27	65.000 m <sup>2</sup>	2015
KÜÇÜKYALI NİDA PARK	REINFORCED CONCRETE	TAHİNCİOĞLU ARC. 216 687 30 40	315.000m <sup>2</sup>	2016
ŞEHİR KONAKLARI	REINFORCED CONCRETE	SUR YAPI INC. 216 422 56 37	43.000m <sup>2</sup>	2016
FOLKART	REINFORCED CONCRETE/ STEEL CONSTRUCTION	DİLEKÇİ ARCHITECTS 212 277 11 50	30.000 m <sup>2</sup>	2016



## MÜHENDİSLİK İNŞAAT SANAYİ ve TİCARET LTD. ŞTİ.

PROJECT NAME	TYPE	COMPANY	TURNOVER	DATE
TOSYALI CEZAYİR	REINFORCED CONCRETE	BAKIRKÜRE ARCHITECTS 212 257 83 80	30.000 m <sup>2</sup>	2016
SANCAKTÜL	REINFORCED CONCRETE	SİNPAŞ INC. 212 310 27 27	85.000 m <sup>2</sup>	2016
DRS	REINFORCED CONCRETE	TAGO ARCHITECTS 216 651 77 77	30.000 m <sup>2</sup>	2016
VILLA BAHAR 3	REINFORCED CONCRETE	DİLEKÇİ ARCHITECTS 212 277 11 50	15.500 m <sup>2</sup>	2016
MEGAPOLCITY	REINFORCED CONCRETE	EPIG ARCHITECTS 232 462 04 02	200.000 m <sup>2</sup>	2016
THY SIMULATION CENTRE	REINFORCED CONCRETE/ STEEL CONSTRUCTION	TAGO ARCHITECTS 216 651 77 77	25.000 m <sup>2</sup>	2016
ALTINYURT FITNESS CENTRE & OFFICE	REINFORCED CONCRETE	TAGO ARCHITECTS 216 651 77 77	7.500m <sup>2</sup>	2016
ALTINYURT FITNESS CENTRE & OFFICE	REINFORCED CONCRETE	TAGO ARCHITECTS 216 651 77 77	7.500m <sup>2</sup>	2016
AJYAD HOSPITAL	REINFORCED CONCRETE/ POST-TENSION	SAUDI BIN LADIN GROUP	100.000m <sup>2</sup>	2016
KOTOR HOTEL PROJECT	REINFORCED CONCRETE	KREATİF ARCHITECTS 212 216 71 31	25.000m <sup>2</sup>	2017
REYSAŞ	REINFORCED CONCRETE	SUR YAPI INC. 216 422 56 37	20.000m <sup>2</sup>	2017
ÇELİKEL	REINFORCED CONCRETE	SUR YAPI INC. 216 422 56 37	47.000m <sup>2</sup>	2017
HAYAT KİMYA DETERGENT FACTORY- IRANIAN	STEEL CONSTRUCTION	HAYAT KİMYA INC. 262 724 84 25	30.000m <sup>2</sup>	2018
MEYDANBEY KASIMPAŞA KUVEYT AL MUTLAA PROJECT	REINFORCED CONCRETE SUBSTRUCTURE	PAM YAPI INC. KOLİN CONSTRUCTION 312 447 17 00	20.000m <sup>2</sup> -	2018 2018
RODOPMAN ISPARTAKULE	REINFORCED CONCRETE	EVRENOL ARCHITECTS 216 326 97 19	80.000m <sup>2</sup>	2018
ZÜMRÜTEVLER	REINFORCED CONCRETE	SUR YAPI INC. 216 422 56 37	50.000m <sup>2</sup>	2018
TERSHANE İSTANBUL	REINFORCED CONCRETE – HOTEL, SHOPPING MALL,LUXURY HOUSING-	TABANLIOĞLU ARCHITECTS 212 251 21 11	650.000 m <sup>2</sup>	2019
ATAKÖY MEDICANA HOSPITAL	REINFORCED CONCRETE	ZOOM ARCHITECTURAL DESIGN 212 251 34 46	30.000m <sup>2</sup>	2019
HALK GYO DİLOVAŞI INDUSTRIAL ESTATE	REINFORCED CONCRETE INDUSTRIAL CENTRE	KUP ARCHITECTS 216 470 50 37	170.000 m <sup>2</sup>	2021
MESA KARANFİLKÖY	REINFORCED CONCRETE – RESIDENTAL BUILDINGS, COMMERCIAL AREAS	MESA MESKEN 212 291 51 20	375.000 m <sup>2</sup>	2022
FOUR SEASONS PRIVATE RESIDENCES ETİLER	REINFORCED CONCRETE – HOTEL COMPLEX	ASTAY 212 276 01 00	45.000 m <sup>2</sup>	2022
SUR YAPI ANTALYA VACATION HOMES	REINFORCED CONCRETE	SUR YAPI INC. 216 422 56 37	165.000m <sup>2</sup>	2022



## TECHNICAL STAFF LIST

### **ORHAN İLKAY ERGÜNES, Structural Engineer, M. Sc.**

**Date of Birth** :1978

**High School** :Ahmet Şimşek Since High School, 1994.

**Bachelor's Degree** :Y.T.U Civil Engineering Fac.,Civil Engineering, 1998.

**Master's Degree** :I.T.U Civil Engineering Fac.,Division of Structures, 2001.

**Ph. D** :I.T.U Institute of Science (Thesis State)

**Registry No** :Chamber of Civil Engineers, 49738

**Foreign Language** :English (Good)

- 2000-2001 :AL-CEN Construction Istanbul Subway Construction, Structural Engineer
- 2001 – 2005 :MPI Engineering, Project Engineer
- 2006 :Büro Statik Engineering Construction Co. Ltd.,General Manager

### **FATİH YEŞİLSELVİ, Structural Engineer, M. Sc.**

**Date of Birth** :1976

**High School** :Beşiktaş Atatürk Anatolian High School ,1994

**Bachelor's Degree** :Y.T.U Civil Engineering Fac.,Civil Engineering., 1998

**Master's Degree** :Y.T.U Civil Engineering Fac.,Division of Mechanics, 2001

**Registry No** :Chamber of Civil Engineers, 50997

**Foreign Language** :English (Very Good)

- 1998 – 2006 :MPI Engineering, Project Engineer
- 2006 - :Büro Statik Engineering Construction Co. Ltd., General Manager



**TANSU KOÇ ERGÜR, Structural Engineer**

**Date of Birth** :1995

**High School** :Vali M.G. Anatolian High School, 2013.

**Bachelor's Degree** :İstanbul University, Civil Engineering, 2018.

**Foreign Language** : English (Good)

- 2018-2020 :Celil Yıldırım Architecture and Engineering Co., Structural Engineer
- 2020 - : Büro Statik Engineering Construction Co. Ltd., Structural Engineer

**RUFAİ DEMİR, Structural Engineer**

**Date of Birth** :1995

**High School** :Horasan Anatolian High School, 2013.

**Bachelor's Degree** :Karadeniz Technical University, Civil Engineering, 2018.

**Foreign Language** :English (Good) Russian (Good)

- 2018 - 2019 :Penta Mensucat A.Ş., Site Engineer
- 2019- 2020 :Renaissance Holding, Technical Office Engineer
- 2020- 2021 :Keleşler Group, Site Engineer
- 2021 - :Büro Statik Engineering Construction Co. Ltd., Structural Engineer





## ENGINEERING CONSTRUCTION CO. LTD.

### ELCİN İSMAİLOĞULLARI, Structural Engineer

**Date of Birth** :1995

**High School** : Rıza Ertuğrul Eryılmaz Anatolian High School, 2014.

**Bachelor's Degree** : Kırklareli University, Civil Engineering, 2018.

**Foreign Language** : English (Good)

- 2018 - 2021 : Nelsa Construction Co. Ltd., Structural Engineer
- 2021 - : Büro Statik Engineering Construction Co. Ltd., Structural Engineer

### BURHAN ÖZTÜRK, Structural Engineer M.Sc.

**Date of Birth** :1994

**High School** :Yunus Emre Anatolian High School, 2011.

**Bachelor's Degree** :Karadeniz T.University Civil Engineering, 2018.

Karadeniz T.University Topographical Engineering, 2019.

**Master's Degree** :Marmara Uni. Occupational Health and Safety, 2021.

**Registry No** :Chamber of Civil Engineers, 129277

**Foreign Language** :English (Good)

- 2020 - 2022 :Maysera Project, Structural Engineer
- 2022 – :Büro Statik Engineering Construction Co. Ltd., Structural Engineer

### HİKMET GÖKSU, Structural Engineer



## ENGINEERING CONSTRUCTION CO. LTD.

**Date of Birth** :1996  
**High School** :E. Oner M. Oner Anatolian High School, 2014.  
**Bachelor's Degree** :Yildiz Technical University, Civil Engineering, 2020.  
**Master's Degree** :I.T.U Earthquake Engineering, M.Sc, (Continues)  
**Foreign Language** :English (Good)

- 2022 - :Büro Statik Engineering Construction Co. Ltd., Structural Engineer

### Asil SELÇUK, Structural Engineer

**Date of Birth** :1994  
**High School** :Zeytinburnu Anatolian High School, 2012.  
**Bachelor's Degree** :Kultur University, Civil Engineering, 2018.  
**Master's Degree** :Y.T.U Civil Engineering, M.Sc, (2021)  
**Foreign Language** :English (Good)

- 2019 - 2021 : Buro Statik Engineering Construction Co. Ltd., Structural Engineer
- 2022- 2023 : Prota Engineering and Conculancy
- 2023 - : Buro Statik Engineering Construction Co. Ltd., Structural Engineer

### AZADE ÇELİK, Structural Engineer

**Date of Birth** :2000  
**High School** :Kanuni Anatolian High School, 2018.  
**Bachelor's Degree** :Maltepe University, Civil Engineering, 2022.  
**Foreign Language** :English (Good)

- 2022 - : Büro Statik Engineering Construction Co. Ltd., Structural Engineer



## ENGINEERING CONSTRUCTION CO. LTD.

### **SAHİN ALTAN, Structural Engineer (TeklaXsteelOperator)**

**Date of Birth** :1993

**High School** :Zincirlikuyu Construction High School, 2010.

**Associate Degree** :Çanakkale 18 Mart Uni. – Construction Technology, 2012.

**Bachelor's Degree** : Beykent University, Civil Engineering, 2020.

- 2012 – 2015 : Tez Yapı Engineering, Draftsman
- 2015 - 2019 : TLOS Engineering, Xsteel Operator
- 2019 - : Büro Statik Engineering Construction Co. Ltd., Structural Engineer, TeklaXsteel Operator.

### **BERKANT BULUT, Structural Engineer (TeklaXsteelOperator)**

**Date of Birth** :1998

**High School** :Ahmet Keleşoğlu Anatolian High School, 2017.

**Bachelor's Degree** :Balıkesir University Civil Engineering, 2021.

**Foreign Language** :English (Good)

- 2021 - :Büro Statik Engineering Construction Co. Ltd., Stuctural Eng., TeklaXSteel Operator



## ENGINEERING CONSTRUCTION CO. LTD.

### **SENOL SÖYLEMEZ, Construction Draftsman**

**Date of Birth** :1986

**High School** :Zincirlikuyu Construction High School ,2003.

**Associate Degree** :Kocaeli University, Construction Dep., 2006.

- 2002 – 2005 :MPI Engineering, Construction Draftsman
- 2006 - :Büro Statik Engineering Construction Co. Ltd., Construction Draftsman

### **AHMET AYÇİBİN, Construction Draftsman**

**Date of Birth** :1985

**High School** :ISOV Construction High School, 2003.

- 2002 – 2006 :Timka Engineering, Construction Draftsman
- 2006 – 2007 :STFA, Construction Draftsman
- 2008 - : Büro Statik Engineering Construction Co. Ltd., Construction Draftsman

### **ARZU YILMAZ, Construction Draftsman**

**Date of Birth** :1981

**High School** :Zincirlikuyu Construction High School, 1998.

**Foreign Language** :English (Good)

- 1998 – 2015 :Probi Build, Construction Draftsman
- 2015 – 2020 :Büro Statik Engineering Construction Co. Ltd., Construction Draftsman
- 2021 - 2021 :Sigma Engineering, Construction Draftsman
- 2021- :Büro Statik Engineering Construction Co. Ltd., Construction Draftsman



## ENGINEERING CONSTRUCTION CO. LTD.

### DERYA ÇOBANOĞLU, Construction Draftsman

**Date of Birth** :1981

**High School** :Trabzon Akçaabat High School,1999.

**Associate Degree** :Karadeniz T. University, M.Y.O. Construction Dep., 2001.

?

- 2006 - :Büro Statik Engineering Construction Co. Ltd., Construction Draftsman

### SEHER BALCI, Construction Draftsman

**Date of Birth** :1989

**High School** :Akşemsettin Anatolian High School, 2006.

**University** : Çanakkale 18 Mart University Construction Dep, 2010.

- 2010– 2019 :Büro Statik Engineering Construction Co. Ltd., Construction Draftsman
- 2021 - 2021 :Net Engineering Construction Co. Ltd., Construction Draftsman
- 2022 :Büro Statik Engineering Construction Co. Ltd., Construction Draftsman

### UMUT GÖZ, Construction Draftsman

**Date of Birth** :1995

**High School** : Zincirlikuyu Construction High School, 2016.

- 2016 :Büro Statik Engineering Construction Co. Ltd., Construction Draftsman



## ENGINEERING CONSTRUCTION CO. LTD.

### **SELEN TÖLÜOĞLU, Construction Draftsman**

**Date of Birth** :1999

**High School** :Zincirlikuyu Construction High School, 2017

- 2016 – 2017 : Büro Statik Engineering Construction Co. Ltd. (Intern Construction Draftsman)
- 2017 - : Büro Statik Engineering Construction Co. Ltd., Construction Draftsman

### **SALİH TAN, Construction Draftsman**

**Date of Birth** :2000

**High School** :Zincirlikuyu Construction High School, 2018

- 2017 – 2018 :Büro Statik Engineering Construction Co. Ltd. (Intern Construction Draftsman)
- 2018 - :Büro Statik Engineering Construction Co. Ltd., Construction Draftsman

### **ESRA ŞAHİNKAYA, Administrative Assistant**

**Date of Birth** :1989

**High School** :Maçka Akif Tunçel Technical High School, 2012

**University** :Anatolian University Public Administration, (continues).

- 2015 – :Büro Statik Engineering Construction Co. Ltd. (Administrative Assistant)



## ENGINEERING CONSTRUCTION CO. LTD.

### THE SOFTWARES USED FOR STRUCTURAL DESIGN CALCULATIONS AND DRAWINGS

- ETABS NonLinear
- SAP2000
- SAFE
- Revit
- AutoCAD
- X Steel
- GStarCad



**BABILON TOWER – GEORGIA/BATUMI  
55 STORY REINFORCED CONCRETE RESIDENCE**





**ENGINEERING CONSTRUCTION CO. LTD.**



19.000m<sup>2</sup>, SRP-13, TURKMENIA  
15 STOREY REINFORCED CONCRETE RESIDENCE





15.000m<sup>2</sup>, EYE HOSPITAL, TURKMENIA  
REINFORCED CONCRETE HOSPITAL





12.000m<sup>2</sup>, TURKMENIA, REINFORCED CONCRETE HOSPITAL

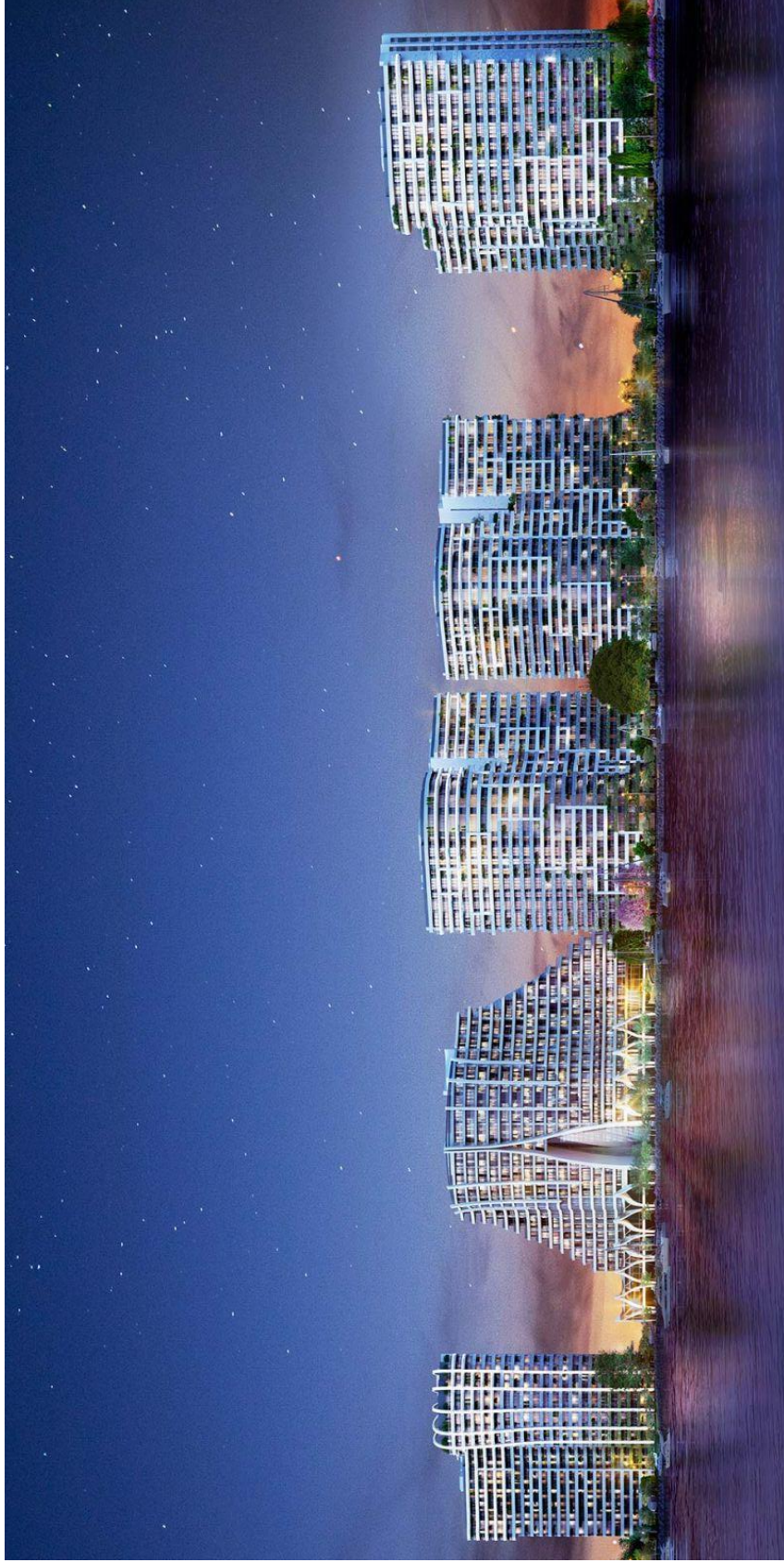




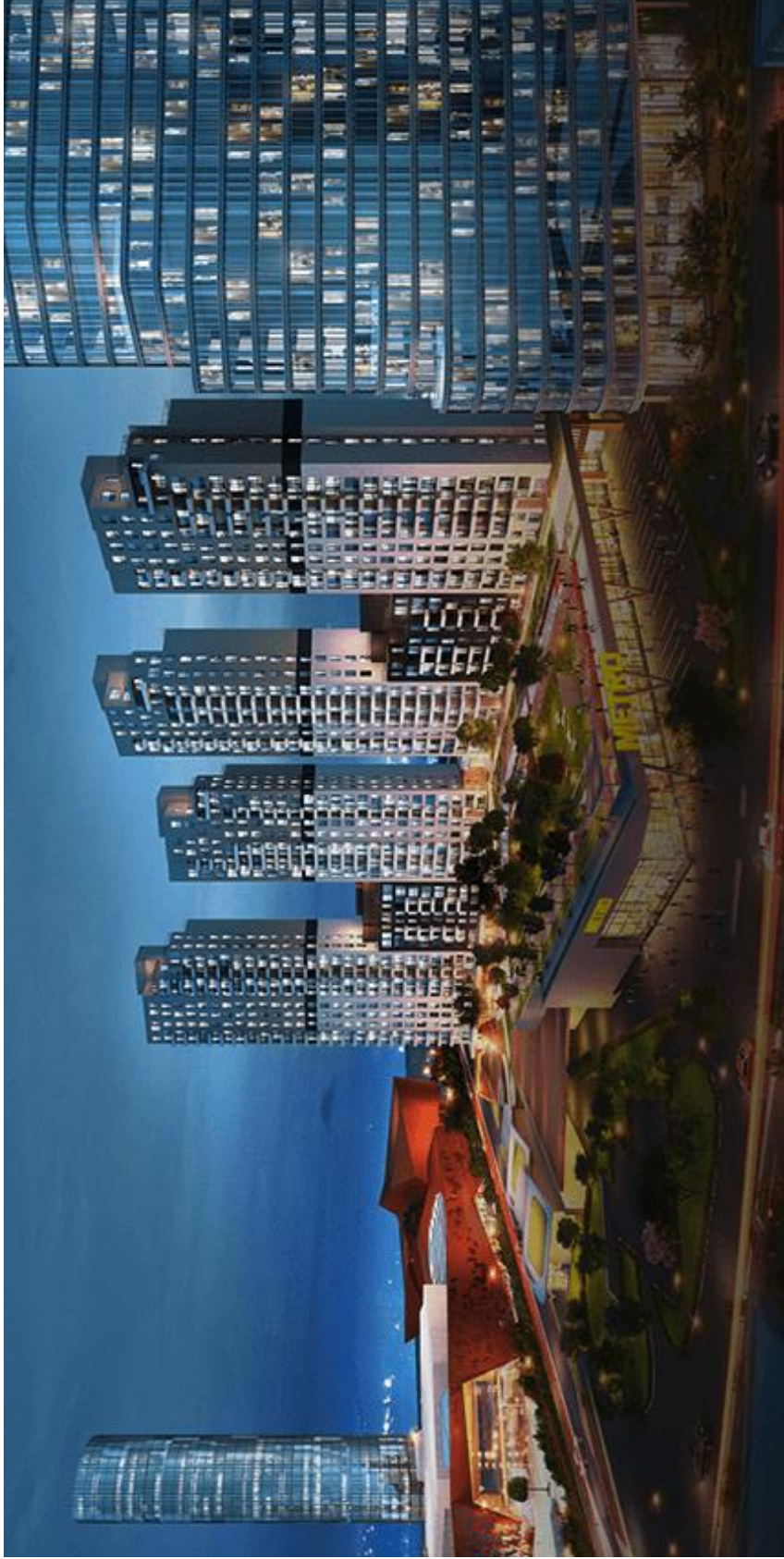
100.000m<sup>2</sup>, AJYAD HOSPITAL & HOTEL  
REINFORCED CONCRETE HOSPITAL & HOTEL SHOPDRAWING



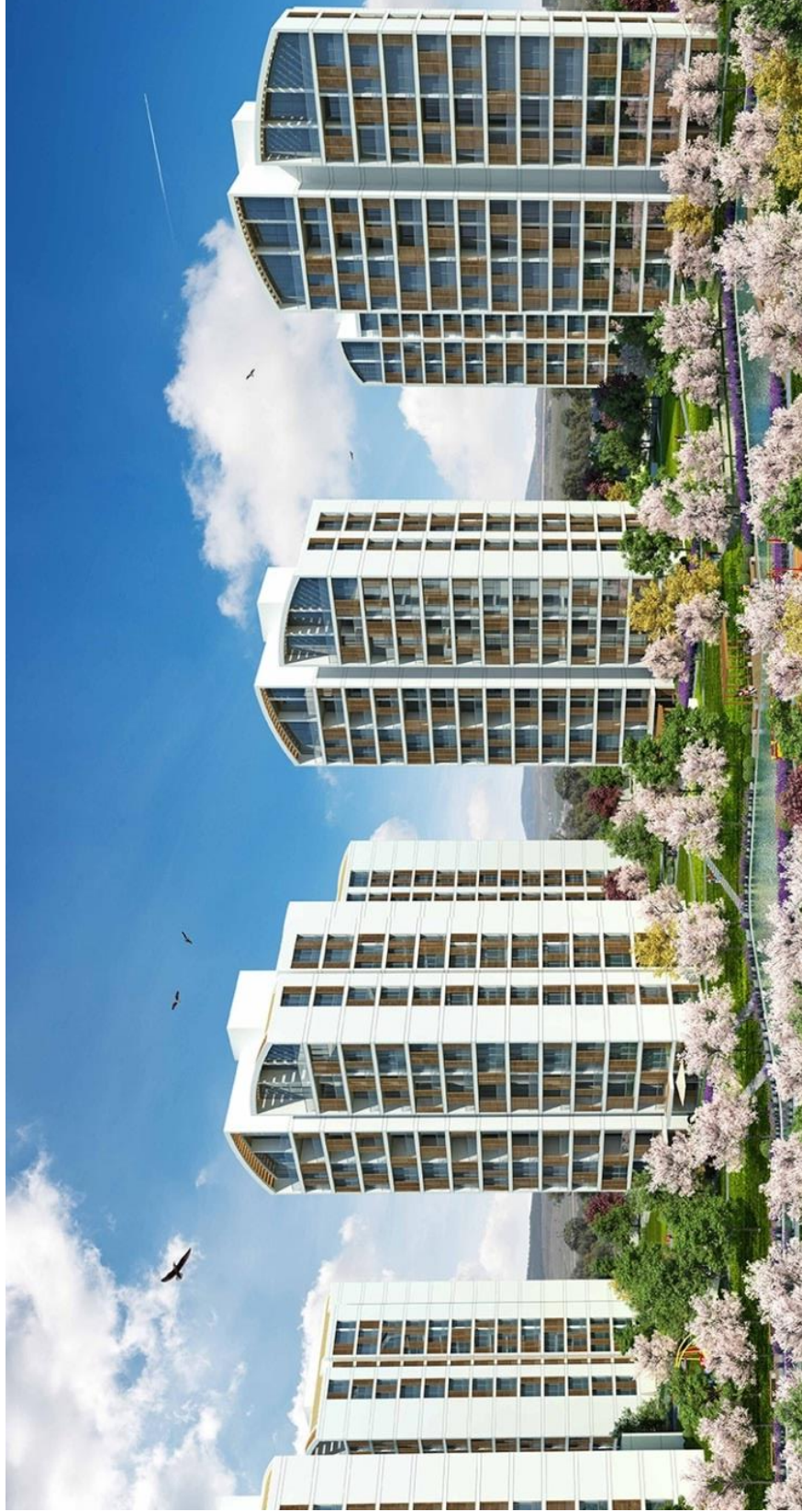
150.000m<sup>2</sup>, SİNPAŞ GYO  
BOMONTİ QUEEN CENTRAL PARK  
55 STORY REINFORCED CONCRETE RESIDENCE



400.000m<sup>2</sup>, SEAPEARL KUZUGRUP  
REINFORCED CONCRETE RESIDENCE

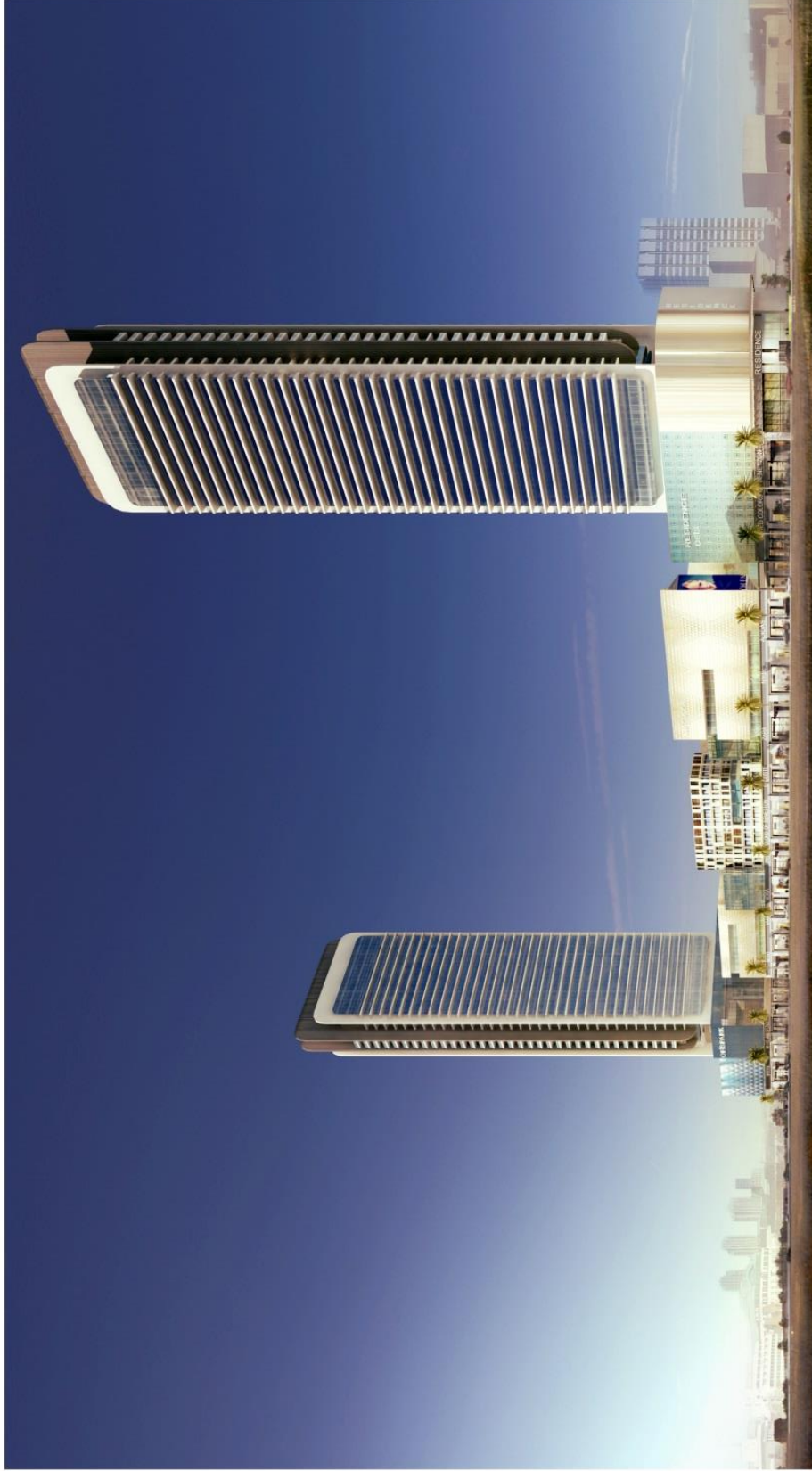


120.000m<sup>2</sup>, DKY KARTAL  
REINFORCED CONCRETE RESIDENCE & METRO GROSS MARKET



225.000m<sup>2</sup>, RESİM İSTANBUL  
REINFORCED CONCRETE RESIDENCE





205.000m<sup>2</sup>, İZMİR MEGAPOLCITY  
REINFORCED CONCRETE 40 STOREY OFFICE & RESIDENCE



200.000m<sup>2</sup>, MECCA WESTIN & SHERATON HOTEL  
REINFORCED CONCRETE STRUCTURE with POST-TENSIONED SLAB  
THIRD PARTY CONTROL & CONSULTANCY



150.000m<sup>2</sup>, KOÇ UNIVERSITY HEALTH SCIENCES CAMPUS  
REINFORCED CONCRETE STRUCTURE





136.000m<sup>2</sup>, SİNPAŞ ANKARA CANKAYA THE FIRST  
52 STOREY REINFORCED CONCRETE + STEEL CONSTRUCTION TOWER





63.000m<sup>2</sup>, SİNPAŞ ZEYTİNBURNU OTTOMARE  
REINFORCED CONCRETE RESIDENCE



ENGINEERING CONSTRUCTION CO. LTD.

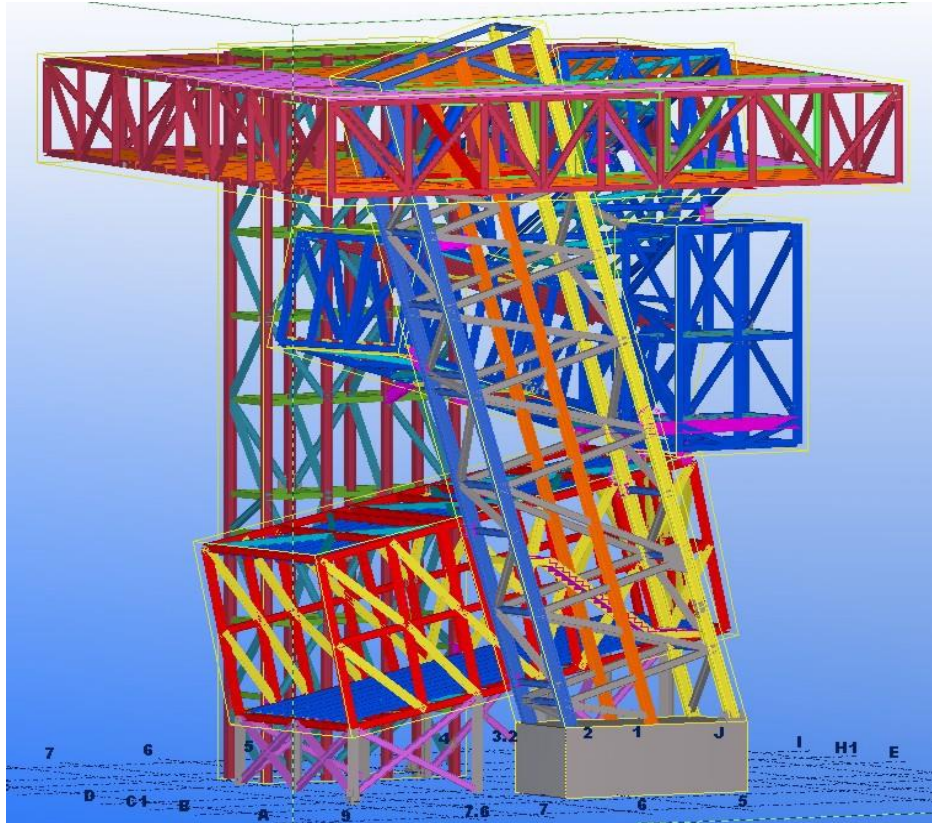


105.000m<sup>2</sup>, ECZACIBAŞI ZEKERİYAKÖY, ORMANADA  
REINFORCED CONCRETE VILLA COMPLEX





10.000m<sup>2</sup>, NAKKAŞTEPE VAKKO HEADQUARTERS  
REINFORCED CONCRETE & STEEL CONSTRUCTION





800.000m<sup>2</sup>, IRAQ, EMPIRE WORLD  
TUNNEL FORMWORK REINFORCED CONCRETE RESIDENCE & OFFICE COMPLEX